

## Ethernet Switches

Enhanced Performance & Unique Features to Support IP Video Networks



Spending wisely on IP switches means understanding the whole cost of the device and avoiding the pitfalls of buying cheap. When it comes to surveillance, IP cameras behave differently to other IP devices. They place varying demands on the power infrastructure with heating, IR lighting and day/night settings, and they generate a time critical datastream.



The Powerhaus switch range has been designed to cope with the specific requirements of IP video; to reduce replacement costs and to cut ongoing expenses by minimising setup time and journeys to site.

### ✓ Lower Replacement Costs with a Switch Range Designed for the Demands of Video

#### Add More Cameras to the Network

Powerhaus switches have increased backplane capacities, to cope with more cameras than standard switches.

#### 100Mbps & 1Gbps Jumbo Frame Support

Most Ethernet switches designed for IT networks only support Jumbo Frames at 1Gbps. In a surveillance network this results in lost frames. Powerhaus switches support Jumbo Frames at 100Mbps and 1Gbps.

### ✓ Reduce Time & Cost and Keep Network Downtime to a Minimum

#### Enhanced Device Management & Troubleshooting

- PoE monitoring
- Management & scheduling for energy-saving
- Cable diagnostics
- SNMP support

#### Remotely View Switch Traffic

By being able to see the traffic on each port it's much easier to diagnose errors and outages remotely.

#### Active Camera Tracking & Fault Logging

Cameras are periodically pinged to check status. If they fail to respond, PoE is taken away to re-boot the switch and the fault is logged. Fault logging allows you to understand and pinpoint network and device issues much faster.

#### Import graphics files

By importing maps or site plans, the system will show you exactly where each of the switches are located

### ✓ Cut Maintenance Costs with Intelligent PoE

#### Variable PoE Management

When you connect up a PoE device, the powered device negotiates its power needs with the power sourcing equipment. In most cases, that's a one-off process, with no facility for changes such as additional power for heating. With most standard switches, increased power demands will cause the link to fail, so you'll need to reset. And then, when the heater is no longer required, you'll need to remember to cycle the power again. Powerhaus switches take care of varying power demands without any need for intervention.

#### Individual Port Power Delay Mode

Powerhaus switches allow you to gradually step up the power to individual ports to prevent overloads.

#### PoE Consumption Control

Trigger points can be set to flag up a device if its power consumption is increasing beyond normal limits.

- ✓ PoE devices
- ✓ Managed and unmanaged switches
- ✓ 10/100/1000Mbps, 1/10Gbps & SFP ports
- ✓ Booster switches - 12Vdc input, PoE out
- ✓ Built-in monitoring, diagnostics & troubleshooting
- ✓ DIN rail & 19" rack mount
- ✓ Layer 3 static routing devices
- ✓ G.8032 & Cisco Discovery Protocol
- ✓ Multiple VLANs
- ✓ Support ONVIV
- ✓ Optional switch app.

## An Outstanding Graphical Interface

- ✓ See all connected devices - check to see if cameras are streaming video
- ✓ Test the cable between switch and camera
- ✓ Connect non-ONVIV products and label them on the GUI
- ✓ Flash LEDs on the switch to ensure you are at the right device on site

## The Powerhaus Switch Range

Part Code	Format	PORTS			Managed	Layer 3 Functionality	PoE	PoE (max)
		Electrical	Combo	SFP				
PH-PC-PIGE502GBTE	DIN rail	5	-	2	-	-	4 x PoE+	120W
PH-PC-PIGE502GBTE-B 12Vdc input (booster)	DIN rail	5	-	2	-	-	4 x PoE+	120W
PH-LT-80*GBTME	DIN rail	8	*2/4	-	✓	-	-	-
PH-LT-PIGE-80*GBTME	DIN rail	8	*2/4	-	✓	-	8 x PoE+	-
PH-RY-LGSP16-10	19" 1U	8	1	-	Light	✓	8 x PoE+	130W
PH-RY-LGSP23-10G	19" 1U	8	2	-	✓	✓	8 x PoE+	130W
PH-RY-GSP23-26	19" 1U	20	4	2	✓	-	24 x PoE+	185W
PH-RY-LGSP23-26/370*	19" 1U	24	2	-	✓	✓	24 x PoE+	185/370W*
PH-RY-LGSP23-28/370*	19" 1U	24	-	4x1/10G	✓	✓	24 x PoE+	185/370W*
PH-RY-LGSP23-52/740*	19" 1U	48	-	4x1/10G	✓	✓	48 x PoE+	370/740W*
PH-RY-LGS025-24	19" 1U	-	4	24x100/1000	✓	✓	-	-
PH-RY-LGS025-28	19" 1U	4	-	24x100/1000 +4x1/10G	✓	✓	-	-



## How we Work

We listen to our customers - working closely with you makes us better at understanding exactly what you need, and delivering it at the right price.

We recommend the best solution for you - not the best for us.

We aim to help you spend as little time on site as possible.

Our business is transmission. Our team understands transmission, and we make it our business to know and understand what's new in the world of transmission.

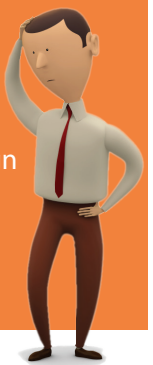
We work with suppliers we trust.

We keep your data to ourselves.

## How we can Help

We offer a free transmission design service for products that you purchase from us. We can assist with everything from understanding the system specification, producing a system design through to final product selection.

If you need help, just let us know!



We aim to make the information in our guides informative and helpful to our customers. Although we have made every effort to ensure that the information was correct at the time of writing, Clear Vision Technologies does not assume and hereby disclaim any liability to any party for any loss, damage, or disruption caused by errors or omissions, whether such errors or omissions result from negligence, accident, or any other cause.

Contact us about your next installation

No.4 The Stables  
Lynx Park Business Centre  
Colliers Green  
Cranbrook, Kent, TN17 2LR



t: 01580 212999  
e: sales@cv-tech.co.uk  
www.cv-tech.co.uk