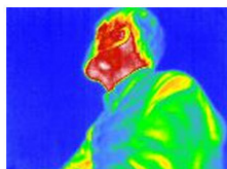


KLIS TeDe

Dual Cam Temperature Detector

KLIS TeDe is a perfect device to be used as EST, Elevated Skin Temperature detector. Used in combination with Euklis FaRe Hybrid can generate an alarm event to be sent to a third party system or showed on a monitor if the temperature of the subject or the object in the field of view is high than a set level.



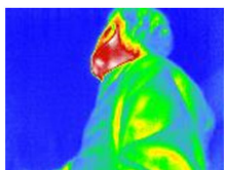
THERMAL



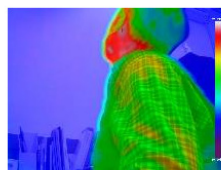
THERMAL - USER



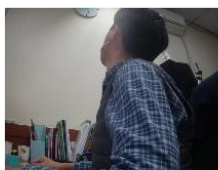
VISUAL



THERMAL



OVERLAY



VISUAL

FEATURES

- Dual Sensor (Thermal+Sensor) IP Camera
- 3 Mode Display Support (Visual/Thermal/ Overlay)
- White LED (Manual operation or temperature alarm)
- IP67 Ingress Protection
- High Temperature Measurement Support (-10 °C ~ 450 °C)
- Onvif-compliant
- PoE, 12VDC

TECHNICAL SPECIFICATIONS

THERMAL	
IR Sensor Frame Rate	< 9 Hz
IR Sensor Resolution	160 (h) × 120 (v) Pixel
Spectral Range	LWIR , 8 to 14 μm
Field of View (FOV)	56° HFOV, 71° diagonal (f/1.1 silicon doublet)
Temperature Sensitivity (NETD)	<50 mK (0.05°C)
Temperature Range	Low Gain Mode: -10 °C ~ 140 °C High Gain Mode: -10 °C ~ 450 °C
VISUAL	
CMOS Sensor	Sony Diagonal 6.15mm CMOS Progressive Scan
Effective Pixels	3096(H) X 2202(V) : 6.82M Pixel
Frame Rate	30 fps
Resized Resolutions	Visual Mode Only: 2592X1944, 2048X1536, 1600X1200 All Modes: 1920X1080, 1280X720, 1024X768, 640X480
Multi User Access	8
OTHERS	
Alarm Out	1 port (Dry contact, relay out)
Operating Temperature	0°C ~ 50°C
Power	PoE (802.3.af), DC12V
Power Consumption	5W (LED ON)
IP Level	IP 67
Dimension (wxhxd)	80x131X47(mm)

All specifications subject to change without notice



Euklis s.r.l.

Via C. Colombo, 23 - 20090 Trezzano s/N (MI) - Italy
Tel. (+39) 02.48.40.92.67 - Fax (+39) 02.48.40.92.66 - www.euklis.it